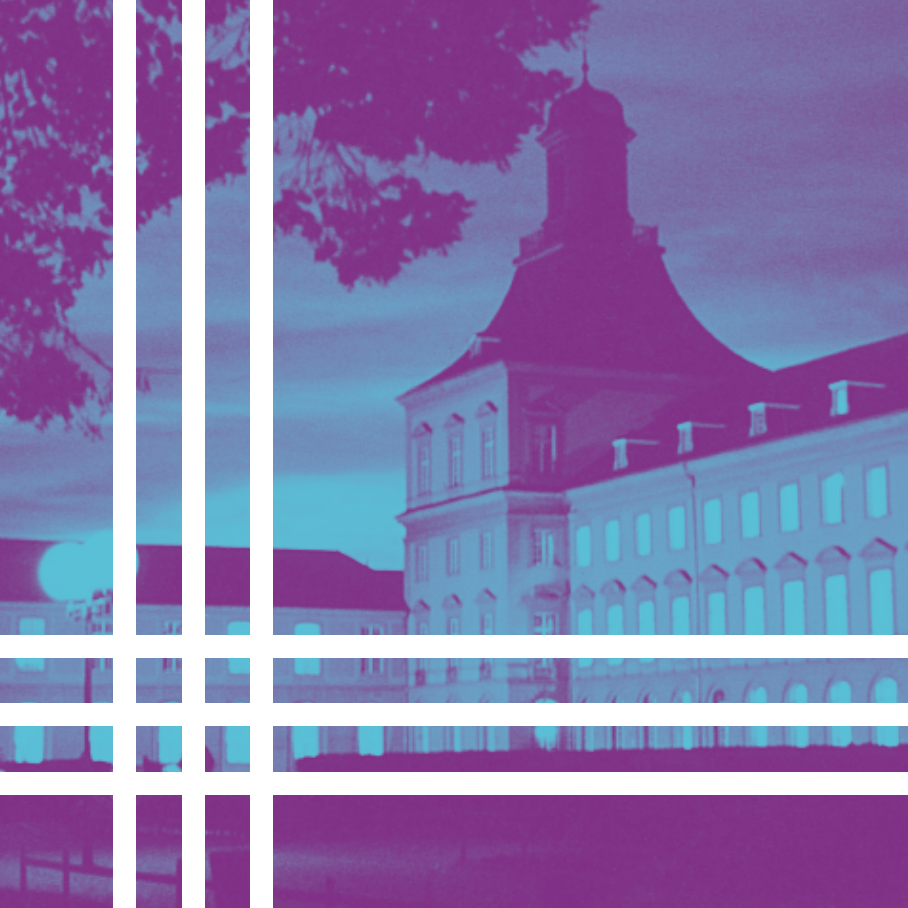


M.A.
APPLIED
LINGUISTICS



MASTER PROGRAM IN APPLIED LINGUISTICS

Applied Linguistics is an interdisciplinary field of research and practice dealing with problems relating to language and communication in society, the media, organizations, business and politics. Students in this M.A. program are given the tools to identify problems and to work on solving them by applying linguistic theories and employing empirical and experimental methods.

The program aims at developing knowledge of the theories and methods used in intercultural communication, second language acquisition, language processing, and translation studies. Course topics include interpersonal communication, regional and social variation in language behavior, (im)politeness across cultures, pragmatic competence, writing in a second language, and cognitive processes in translating.

Students in this program are strongly encouraged to design and conduct their own research projects from the outset. For this purpose we offer access to and support in using linguistic research facilities. The Research Centre for Empirical Pragmatics provides students with a variety of research tools such as recording equipment, linguistic corpora, and software for data gathering, processing and analysis.

STRUCTURE OF THE PROGRAM

- Duration: Two years (four terms), full time
- Credits: 120
- Language of instruction: English
- Third term can be spent at the State University of New York, USA
- Final term: Empirical Master's thesis

1 st term	Applied Linguistics: An Overview	Intercultural Communication	Language Acquisition
2 nd term	Translation Studies OR Language Processing	Research Trends	Professional Development
3 rd term	Exchange semester at the State University of New York		
4 th term	Master's thesis		

This program gives an overview of the field of Applied Linguistics and provides specialization in a wide range of subdisciplines. The core modules are intercultural communication, second language acquisition, language processing, and translation studies. Teaching and research supervision are also offered in pragmatics, discourse analysis, genre analysis, sociolinguistics, dialectology, cognitive linguistics, psycholinguistics, and metalexigraphy.

FOCUS ON RESEARCH, THEORIES AND METHODS

There is a strong focus on research, theories and methodology. Students are given assistance in developing their own research questions, adopting a suitable theoretical framework and selecting an appropriate method. A variety of research tools can be made available. The module 'Research Trends' familiarizes students with current research developments in Applied Linguistics and ongoing research projects worldwide. In this module, internationally renowned scholars give talks and lectures and teach workshops.

PRACTICAL ORIENTATION

Students are equipped to work with language professionally. The module 'Professional Development' provides insights into a range of careers and professions for which Applied Linguistics qualifies students. These include intercultural and communication trainings, international exchange and work programs, translating and multilingual documentation. We have established links with companies and organizations working in these areas, and also with schools in Germany, Canada, and New Zealand. The module 'Professional Development' also involves a six-week internship in Germany or abroad.

INTERNATIONAL PROFILE

The international profile of this program comprises various aspects. There is the option of studying in the USA for one term, where students can take modules in Applied Linguistics at the Graduate School of the State University of New York at Albany. The internship in the module 'Professional Development' can be done abroad. Furthermore, we cooperate with scholars around the world. Internationally renowned researchers teach workshops and give talks and lectures. Finally, all courses are taught entirely through the medium of English.

ENTRY REQUIREMENTS AND ADMISSIONS

30 new students are admitted to our program every year in the fall. Successful applicants have completed an accredited B.A. program which has provided them with solid foundations for the M.A. Program in Applied Linguistics. Ideally, applicants will have attended courses in linguistics or related disciplines.

You can apply to our program between **May 7 and May 20, 2012**. It might be possible to apply at a late application period at the end of August (if there are still vacancies). Further information can be found on our website.

Applicants please submit:

- the application form for Bonn University,
- a notarized copy of their B.A. certificate and diploma supplement (students still enrolled in a B.A. program at the time of application, please submit their current transcript of grades),
- a certified copy of their high school diploma.
- International students need a certificate of intermediate German language proficiency (DSH-1, TestDaF TDN 3). Students opting to take the DSH at the University of Bonn after acceptance into our program, please state this intent in their application.

For more information and updates please visit our website at **www.linguistics.uni-bonn.de** or contact

Professor Dr. Klaus P. Schneider

+49 (0)228 73-7308, bael@uni-bonn.de

Susanne Strubel-Burgdorf

+49 (0)228 73-4959, sstrubel@uni-bonn.de

You can also find us on

Facebook: www.facebook.com/linguisticsbonn

and Twitter: @linguisticsbonn

Bonn Applied English Linguistics

Department of English, American and Celtic Studies

Universität Bonn, Regina-Pacis-Weg 5

53113 Bonn, Germany