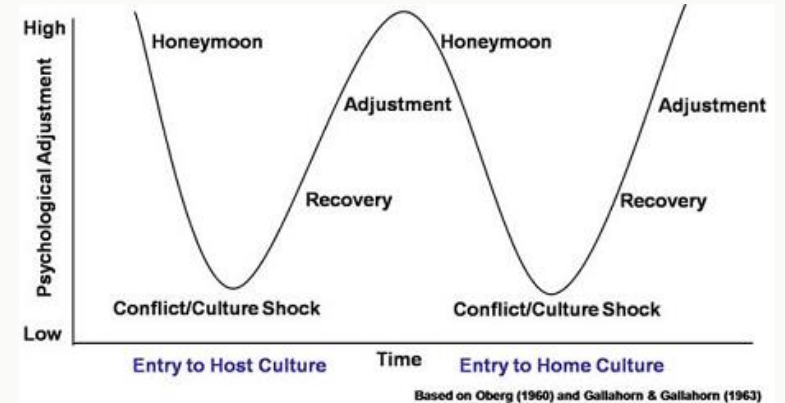


# WELCOME DAYS: OPENING SESSION SEPTEMBER



# INTERCULTURAL EXPERIENCE

- Being abroad is challenging and can be tough at times
- Be prepared for your *Culture Shock* moment
  - it's part of the experience
- New country – new experiences – new friends – Be open-minded



## TIPS FOR ADJUSTING TO A NEW CULTURE

- Take care of yourself physically → [University sports](#) can help with getting motivated
- Connect with other international students and Germans  
→ [International Club](#), [International Choir](#), [Study Buddy Program](#), Facebook group “[International Students Uni Bonn Winter Semester 2023/24](#)” ...
- Explore your host country  
→ Free public transport starting October 1 is included in your student-ID make use of it!
- Give yourself permission to feel sad, frustrated or angry at times. Negative feelings are normal! You should process these emotions, rather than just pushing them away and ignoring the issue  
→ If you experience mental health issues, contact the University’s [Psychological Counseling](#) or the Studierendenwerk’s [Psychological counselling centre](#).  
→ Both are confidential and free of charge!

## WELCOME DAYS

- From now until November 23
- Preparation for semester start
- Info videos can be found [here](#)
- Info events and social events
- [www.uni-bonn.de/welcomedays](http://www.uni-bonn.de/welcomedays)
  - Details about Welcome Days

Follow us on our **new** Instagram  
channel:

[@unibonn.international.students](https://www.instagram.com/unibonn.international.students)



# WELCOME DAYS OVERVIEW - SEPTEMBER

Week 1	Monday, 4	Tuesday, 5	Wednesday, 6	Thursday, 7	Friday, 8	Saturday, 9	Sunday, 10
Morning			9 am: Start of Intensive German Courses				
Afternoon		2-3 pm: Welcome event for participants "Intensive German Courses Before Starting The Semester"	2 pm: Info event "Free Time Activities" with hangout and city tour afterwards	1-2 pm: Info event "Studying at the University of Bonn for Exchange Students"		12 pm Drachenfels Hike	
Evening							
Week 2	Monday, 11	Tuesday, 12	Wednesday, 13	Thursday, 14	Friday, 15	Saturday, 16	Sunday, 17
Morning					10:30 am: Potluck Brunch		
Afternoon		1-2 pm: Info event "Studying at the University of Bonn for Degree Seeking Students"			12-1 pm: Pre-Arrival info event for all new international students		
Evening	7 pm: Sprachcafé		7 pm: Movie Night				

# WELCOME DAYS OVERVIEW - SEPTEMBER

Week 3	Monday, 18	Tuesday, 19	Wednesday, 20	Thursday, 21	Friday, 22	Saturday, 23	Sunday, 24
Morning							
Afternoon							
Evening	7 pm: Sprachcafé		7 pm: Game Night with Ukrainian Student Association				
Week 4	Monday, 25	Tuesday, 26	Wednesday, 27	Thursday, 28	Friday, 29	Saturday, 30	Sunday, 1
Morning							
Afternoon				12:15 pm: end of the "Intensive German Courses Before Starting The Semester"			
Evening	7 pm: Sprachcafé			7 pm: Quiz Night Jeopardy Style			

# WELCOME DAYS OVERVIEW - OCTOBER

Week 5	Monday, 2	Tuesday, 3	Wednesday, 4	Thursday, 5	Friday, 6	Saturday, 7	Sunday, 8
Morning		Reunification Day (Public holiday): all stores are closed on this day		9:30 am – 12:30 pm: Welcome event and info booths for all new students and doctoral students from abroad	10-11 am Q&A Session for new international doctoral students		
Afternoon					1:30 pm: Info event “Free Time Activities” with city tour and hangout in the city afterwards		
Week 6	Monday, 9	Tuesday, 10	Wednesday, 11	Thursday, 12	Friday, 13	Saturday, 14	Sunday, 15
Morning	Start of lectures						
Afternoon							
Evening							

## WELCOME DAYS OVERVIEW – OCTOBER & NOVEMBER

- Tuesday, October 17, 5-6:30 pm: Info Event “Doctors Appointments and Health Insurance”
- Saturday, October 28, 9:30 am – 13:30 pm: Workshop “Culture Shock”
- Thursday, November 2, 3-5 pm: Workshop “Men’s Health”
- Thursday, November 23, 2-5 pm: Workshop “Women’s Health”

Please note: For the workshops “Culture Shock”, “Women’s Health” and “Men’s Health” a registration via [students@uni-bonn.de](mailto:students@uni-bonn.de) is necessary.



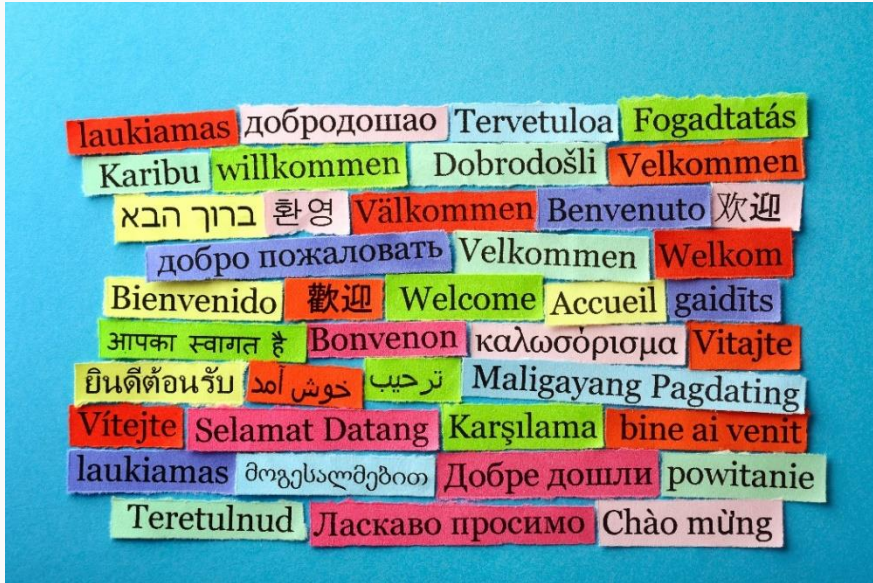
# SEPTEMBER SOCIAL AND CULTURAL PROGRAM

Saturday, September 9	Drachenfels hike
Monday, September 11	Sprachcafé (language café)
Wednesday, September 13	Movie Night
Friday, September 15	Potluck Brunch
Monday, September 18	Sprachcafé (language café)
Wednesday, September 20	Game night with Ukrainian Student Association
Monday, September 25	Sprachcafé (language café)
Thursday, September 28	Quiz Night Jeopardy Style

More information can be found on our website  
[www.uni-bonn.de/int-club](http://www.uni-bonn.de/int-club)



# PRE-SEMESTER INTENSIVE GERMAN COURSE



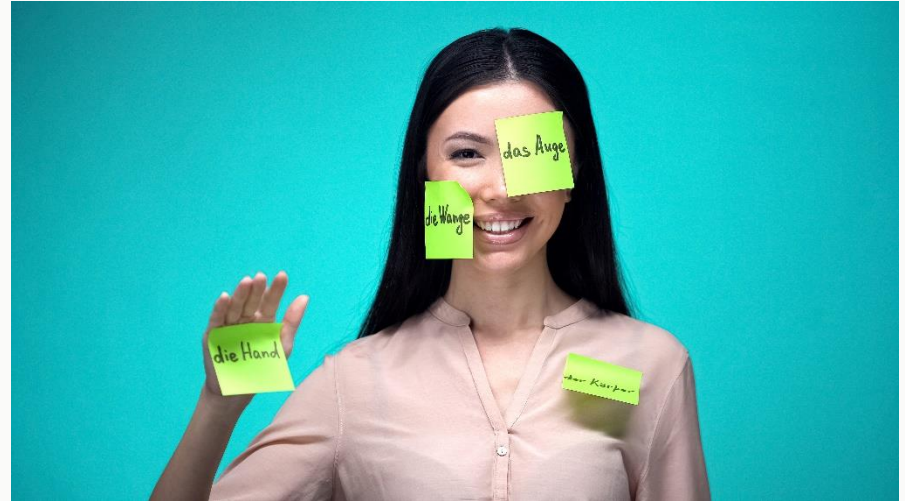
## Schedule

- from **September 06-28, 2023**
- each week covers 16 lessons à 45 minutes
- no classes on Friday 😊

## Course content

- oral and written communication in everyday life
- improvement and consolidation of grammatical structures, vocabulary and phonetics
- information about student life and living in Bonn

The classes are taught by experienced staff and supported by tutors.



# PRE-SEMESTER GERMAN LANGUAGE CLASSES

## Course Material

- teachers will provide the textbook title at the beginning of the course

## Grades and credit points

- different examination formats in the courses
- 4 ECTS credits can be obtained
- You can achieve a partial level in pre-semester and finish the whole level during the semester.



# IN-SEMESTER GERMAN LANGUAGE CLASSES



**Sprechen Sie Deutsch?**

**Nein? Noch nicht?**

**Dann machen Sie doch  
einen Deutschkurs!**

WINTERSEMESTER 2023/24

## SEMESTERBEGLEITENDE DEUTSCHKURSE (SDK)

IN-SEMESTER GERMAN LANGUAGE COURSES (SDK)

### ALLTAGSSPRACHLICHE DEUTSCHKURSE

EVERYDAY GERMAN  
LANGUAGE COURSES

### THEMENSPEZIFISCHE KURSE

SPECIAL TOPIC COURSES

registration online from  
**October 10 to 11, 2023**

[In-Semester German Language Courses — University of Bonn \(uni-bonn.de\)](https://uni-bonn.de)



# ALLTAGSSPRACHLICHE KURSE

## EVERYDAY LANGUAGE (4 HOURS PER WEEK)

A1.1

for beginners with  
no or very little  
previous knowledge

A1.2

for beginners with  
little previous  
knowledge

A2.1

for participants with  
basic knowledge

A2.2

for participants with  
advanced basic  
knowledge



What do I buy?  
Grocery  
shopping in  
German

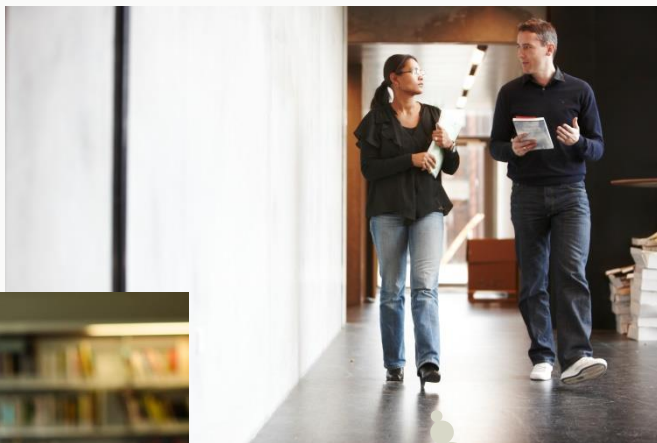
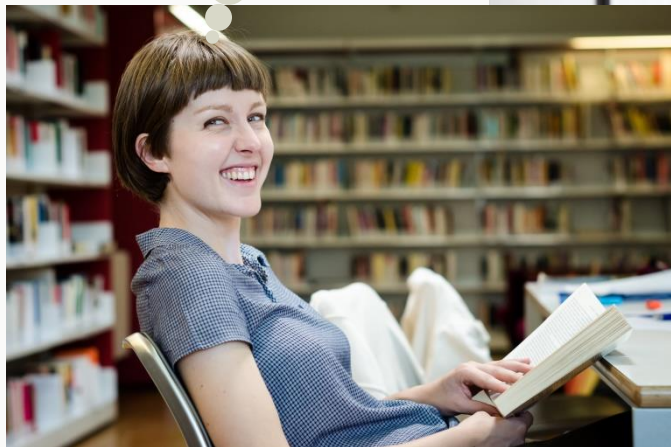
How do I make a  
doctor's  
appointment in  
German?



# ALLTAGSSPRACHLICHE KURSE

## COURSES FOR EVERYDAY LANGUAGE

Ja, ich kann die  
Literatur auf  
Deutsch lesen!



Ihre  
Argumentation  
heute war sehr  
überzeugend.

**B1.1**

für Teilnehmende mit  
grundlegenden  
Kenntnissen

**B1.2**

für Teilnehmende mit  
guten  
Deutschkenntnissen

**B2.1**

für Teilnehmende mit  
fortgeschrittenen  
Kenntnissen

**B2.2 /  
C1**

für Teilnehmende mit  
sehr guten  
Deutschkenntnissen

# THEMENKURSE

## SPECIAL TOPIC COURSES (2 HOURS PER WEEK)

A2/B1	My image of Germany – a practical regional and cultural studies course
A2/B1	Communicative grammar
A2/B1	Practical pronunciation training (phonetics)
B1/B2	Next stop: Germany!
B1/B2	German and art
B1/B2	German for economists







B2/C1 Deutsch für Bewerbung und Beruf

B2/C1 Zeitgenössische Diskurse in Medien, Wissenschaft und Forschung

B2/C1 Grammatik für Fortgeschrittene

B2/C1 Sicher präsentieren und überzeugend diskutieren

B2/C1 Sprechen Sie Wissenschaftsdeutsch? – Deutsch im akademischen Kontext



**B2/C1** Deutschland zwischen gestern und heute (**Geschichte**)

**B1/B2** **Nachhaltigkeit:** Dialog über die Zukunft

→ These two courses are tutored and take place on our learning platform *eCampus* + 3 Live-Sessions via *Zoom*.

## PLACEMENT TEST ONSET

If you are not taking the intensive course before the semester start, you have to take a **PLACEMENT TEST**.

You will receive an access code (TAN) for the placement test upon request from **Sonja Hammer** via e-mail [sonja.hammer@uni-bonn.de](mailto:sonja.hammer@uni-bonn.de)

You have to take the placement test **before** registering for the in-semester language course **by 29 September**.

The result of the placement test will be sent automatically to you – **the score is important for the registration!** You can then register for the appropriate sub-level online.

- ☑ Insurance
- ☑ Enrollment → Student ID → Semester Ticket
- ☑ Dorm lease (and Wohnungsgeberbestätigung)
- ☑ City registration
- ☑ Visa and residence permit (only non-EU citizens)
- ☑ Opening a bank account (mandatory for scholarship holders)

# CAMPUS INTERNATIONAL

**Study Buddy:** Bonn students accompany newly arrived international students at the start of their studies

[www.uni-bonn.de/studybuddy](http://www.uni-bonn.de/studybuddy)

**German courses:** at different levels, everyday language, specialized language courses, intensive courses, everyday German, preparation for the DSH, etc.

[www.uni-bonn.de/en/studying/international-students/german](http://www.uni-bonn.de/en/studying/international-students/german)

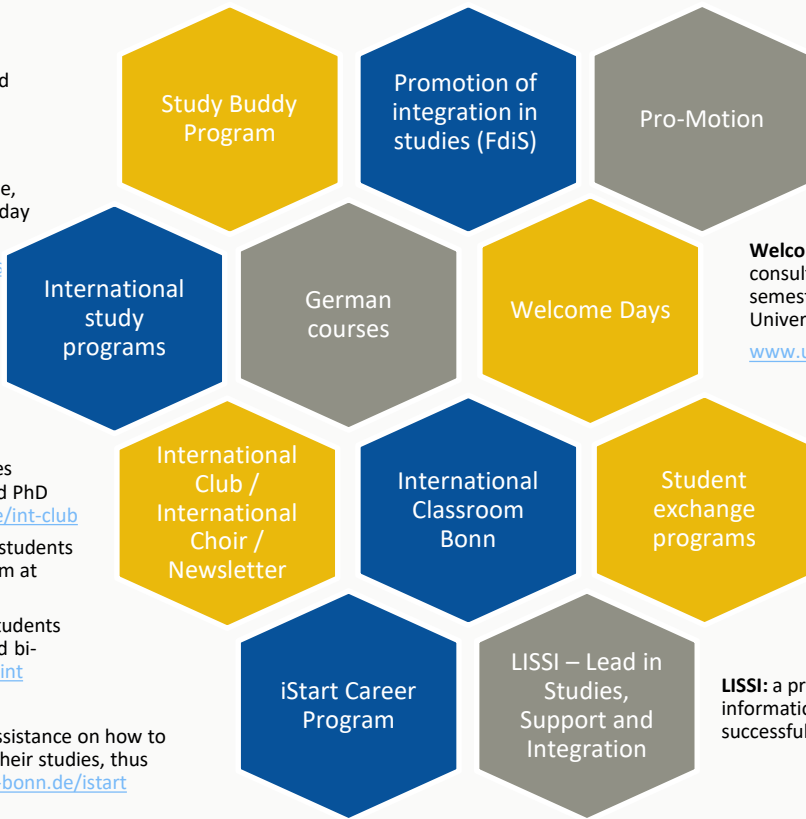
**International study programs:** support with questions and marketing measures for approx. 40 international study programs at the University of Bonn

**International Club:** a meeting place and activity series organized for German and international students and PhD students of the University of Bonn [www.uni-bonn.de/int-club](http://www.uni-bonn.de/int-club)

**International Choir:** international students and PhD students of the University of Bonn practice weekly and perform at various university events [www.uni-bonn.de/int-chor](http://www.uni-bonn.de/int-chor)

**Newsletter:** BonNews newsletter for international students and PhD students of the University of Bonn published bi-weekly [listen.uni-bonn.de/wvs/subscribe/bonnews.int](http://listen.uni-bonn.de/wvs/subscribe/bonnews.int)

**iStart Career Program:** international students get assistance on how to successfully manage their careers during and after their studies, thus facilitating their entry into the job market [www.uni-bonn.de/istart](http://www.uni-bonn.de/istart)



**FdiS:** academic and language preparation for studies and counseling for prospective students with a refugee background [www.uni-bonn.de/fdis](http://www.uni-bonn.de/fdis)

**Pro-Motion:** project to support international PhD students of the University of Bonn before and during their doctorate with a range of advisory and support services [www.uni-bonn.de/pro-motion](http://www.uni-bonn.de/pro-motion)

**Welcome Days:** onboarding activities (information events, consultation, Q&A, social events etc.) at the beginning of each semester for all international students and PhD students of the University of Bonn

[www.uni-bonn.de/welcomedays](http://www.uni-bonn.de/welcomedays)

**International Classroom Bonn:** English taught seminars for undergraduate students [www.uni-bonn.de/ggc](http://www.uni-bonn.de/ggc)

**Student exchange programs:** Erasmus+, Erasmus+ worldwide, Global Exchange Program, Institute Exchange, Fulbright, Parliamentary Sponsorship Program USA, etc.

**LISSI:** a project that provides international first-year students with information and knowledge to help them organize their studies and successfully complete them [www.uni-bonn.de/liSSI](http://www.uni-bonn.de/liSSI)