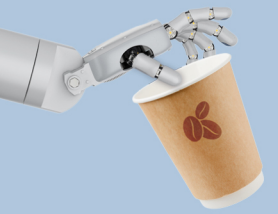


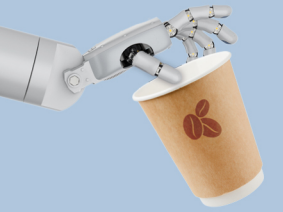
The Waste ABC



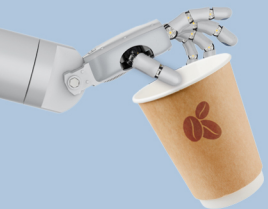
TYPE OF WASTE	PAPER	YELLOW GARBAGE CAN (PACKAGING)	GENERAL WASTE (PRESORTED BY THE LOCAL AUTHORITY)	TIPS ON AVOIDANCE/ ALTERNATIVES	OTHER INFO
Aluminum foil (for household use)		●	● (if very dirty)	Use beeswax wraps or reusable tubs	N.B.: follow the waste disposal guidelines in the event of contact with chemical substances; see the entry for aluminum foil (for lab use)
Aluminum foil (for lab use)					Container for non-standard waste; N.B.: follow the waste disposal guidelines in the event of contact with chemical substances
Ashes (cold)			●		Special garbage cans
Baby food jars		● (with metal lids)			Container for glass
Baking paper			●	Reusable baking sheets	
Ballpoint pens			●	Replace the refill	Permanent marker collection box
Banana peel			● (green garbage can for organic waste, if there is one)		
Batteries				Rechargeable batteries	Collection box, usually kept by the janitors; stick tape over the poles if lithium
Books	●		● (plastic strap)	Re-gift or sell second-hand	
Bottle caps ("crown caps")		●			
Bottle tops		● (if single-trip)		Use bottles with a returnable deposit or a water bottle; drink tap water	Leave on the bottle if multi-trip
Bread bags	●		● (if dirty)	Metal or plastic bread tins	
Cable ties			●		
Calendars/diaries (used)	● (if unlaminated)				
Candles			●	Alternative: LED candles	
Cans/tins		● (without returnable deposit)			Returns station (multi-trip)



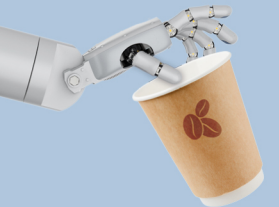
TYPE OF WASTE	PAPER	YELLOW GARBAGE CAN (PACKAGING)	GENERAL WASTE (PRESORTED BY THE LOCAL AUTHORITY)	TIPS ON AVOIDANCE/ ALTERNATIVES	OTHER INFO
CDs/DVDs					Electrical and electronic waste; make data unreadable if necessary (e.g. cut up)
Cell phones				Devices that still work can be passed on	If from University use: Division 2 will collect work cell phones (if from personal use: collection box or hand in to recycling center/shop/DIY store)
Cereal bar wrappers	● (if paper)	● (if plastic)			
Chewing gum			●		
Chewing gum wrappers		●			
Chicken bones or similar			●		
Chips bags		●			
Chocolate bar wrappers	● (if paper)	● (if plastic)			
Cigarette butts			●	Stop smoking	
Cigarette packs	● (paper)	● (plastic)			
Cleaning cloths			●		
Clothes				Buy second-hand or use leftover material as cloths	Container for old clothes
Coffee creamer jiggers		●			Buy larger packs instead of small individual portions
Coffee filters			● (green garbage can for organic waste, if there is one)		
Coffee grounds			● (green garbage can for organic waste, if there is one)		Use coffee grounds as organic fertilizer
Condoms			●		
Cotton buds			●		
Cotton wool, cotton wool pads			●		Reusable cloths/pads made from fabric or similar



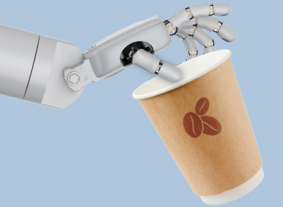
TYPE OF WASTE	PAPER	YELLOW GARBAGE CAN (PACKAGING)	GENERAL WASTE (PRESORTED BY THE LOCAL AUTHORITY)	TIPS ON AVOIDANCE/ ALTERNATIVES	OTHER INFO
Craft waste	● (if paper)		● (if dirty)		
Dental floss			●		
Deodorant		●			
Disinfectant bottles (empty)		●			
Disposable gloves			●		BM—separated into organic and inorganic materials; N.B.: follow the waste disposal guidelines in the event of contact with chemical substances
Documents; photocopies	●				
Dowels			●		
Dressings/bandages		● (plastic packaging)	● (used)		
Drinks cans		● (if single-trip)		Use a reusable water bottle; drink tap water	Return for deposit if multi-trip
Duct tape			●		
E-cigarettes					Electrical and electronic waste: hand in at a recycling center/shop/DIY store
Egg boxes	● (if paper)	● (if plastic)			
Electronics					If from University use, use the pallet cage for electrical and electronic waste (if from personal use, take to the recycling center or hand in at an electronics or DIY store)
Envelopes	● (paper envelope)	● (window film)		For in-house mail: reusable envelopes	
Erasers			●		
Face wipes			●	Reusable cotton cloths	
Felt-tip pens/permanent markers			●		Or put in a permanent marker collection box at



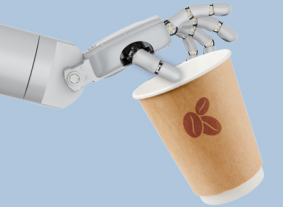
TYPE OF WASTE	PAPER	YELLOW GARBAGE CAN (PACKAGING)	GENERAL WASTE (PRESORTED BY THE LOCAL AUTHORITY)	TIPS ON AVOIDANCE/ ALTERNATIVES	OTHER INFO
					various locations; collection boxes can be ordered from Section 4.1
Female hygiene products			●	Alternatives: menstrual cup, period knickers, etc.	
File folders			●		
Files for shredding (personal data)					Follow the waste disposal guidelines; make a waste disposal request to Section 4.1
Film			●		
Flyers	● (if unlaminated)		● (if laminated)		
Foam rubber			●		
Folding rules			●		
Food packaging (single-use)	● (paper, clean)	● (plastic/styrofoam)	● (very dirty)	Use the multi-trip system or bring your own tub; buy fruit and vegetables loose	
Fruit peelings			● (green garbage can for organic waste, if there is one)		
Gift ribbons			●	Wrap presents creatively, e.g. using newspaper or scraps of material	
Glass bottles					Bottle bank or, if multi-trip, hand in to supermarket
Glue sticks		●			Liquid glue: recycling center
Hair bobbles/ clips			●		
Hand cream packaging (empty)	● (cardboard)	● (plastic)			
Handkerchieves			●		
Highlighters			●	Colored pencils	Permanent marker collection box
Hygiene products			●		
Ice cream packaging	● (cardboard)	● (plastic)			



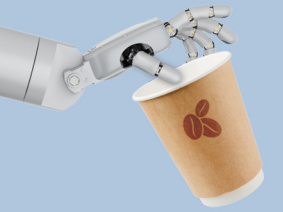
TYPE OF WASTE	PAPER	YELLOW GARBAGE CAN (PACKAGING)	GENERAL WASTE (PRESORTED BY THE LOCAL AUTHORITY)	TIPS ON AVOIDANCE/ ALTERNATIVES	OTHER INFO
IDs from previous semesters	●				
Ink cartridges			●	Fountain pen with refillable cartridge or different kind of pen	
Insulating tape			●		
Kitchen paper (dirty)			●	Washable cloths	
Laminated sheets			●	Avoid laminating sheets or use transparent sleeves as much as possible so that waste can be separated prior to disposal	
Leftover bread			● (green garbage can for organic waste, if there is one)		
Leftover food			●	Pack up leftovers and carry them in e.g. a bread tin	
Leftover meat			●		
Lighters		● (emptied)			Lighters that still contain some gas must be handed in to a mobile hazardous waste collection vehicle or recycling center
Lights				Longer-lasting LED bulbs	If from University use: LEDs and energy-saving light bulbs in the collection box for fluorescent tubes (if from personal use: hand in to recycling center/shop/DIY store)
Magazines	●				
Metal tins		●			
Milk cartons		●			
Mustard tubes (empty)		●			
Nappies			●		
Netting from citrus fruit and vegetables		●		Buy loose; reusable bags	



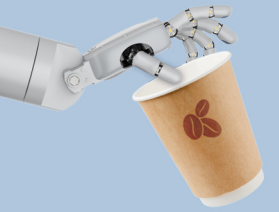
TYPE OF WASTE	PAPER	YELLOW GARBAGE CAN (PACKAGING)	GENERAL WASTE (PRESORTED BY THE LOCAL AUTHORITY)	TIPS ON AVOIDANCE/ ALTERNATIVES	OTHER INFO
Outer packaging		●			
Packaging paper	●				
Paintbrushes			●		
Paper napkins (used)			●		
Paper towels			●	Washable towels	
Paper, printouts	●			Use unneeded printouts and used paper as scratch paper; print double-sided; only print what you really need	
Paperclips			●		
Pencil stubs			●		
Pencils			●		
Permanent markers/felt-tip pens			●		Or put in a permanent marker collection box at various locations
PET bottles (without returnable deposit)		●		Use bottles with a returnable deposit or reusable containers; drink tap water	
Photos			●		
Pizza boxes	●		● (if very dirty)		
Plasters			●		
Plastic bags		●		Reusable or jute bags	
Plastic cups (e.g. from smoothies)		●		Use reusable alternatives	
Plastic wrap		●		Beeswax sheets or tubs	
Potting compost			● (green garbage can for organic waste, if there is one)		
Printer cartridges					Return to special collection boxes or straight to the supplier/seller
Punched pockets		●			



TYPE OF WASTE	PAPER	YELLOW GARBAGE CAN (PACKAGING)	GENERAL WASTE (PRESORTED BY THE LOCAL AUTHORITY)	TIPS ON AVOIDANCE/ ALTERNATIVES	OTHER INFO
Receipts	● (if paper)		● (if laminated)		
Rechargeable batteries					The company "erp" has a collection box for up to 500 g; above this amount, notify Section 4.1 separately
Ring binders (empty)	● (made of paper)		● (plastic)		
Roll-on deodorant		●			
Rubber gloves			●		
Rulers			●		
Scrap metal					Container for metal, or bulky waste if there isn't one
Scratch paper	●				
Shampoo bottles (empty)		●			Solid shampoo bars
Shopping bags	● (if paper)	● (if plastic)			Fabric or jute bags
Single-use crockery	● (clean paper/wooden parts)		● (if very dirty)		Reusable or porcelain
Single-use packaging (e.g. takeouts)		● (just empty; no need to wash)	●		Use reusable alternatives (many providers facilitate this); bring food in your own tub
Soap dispensers (single-use)		● (emptied)	● (containing soap)		Use refillable dispensers
Soup bags		●			
Spiral-bound notepads	● (paper)				
Sponge wipes			●		
Sponges			●		
Spray cans		● (depressurized)			containing remnants (including gas!) Mobile hazardous waste collection vehicle
Spray deodorant		●			
Staples			●		Use staplers that do not need any metal, and fold the paper in on itself



TYPE OF WASTE	PAPER	YELLOW GARBAGE CAN (PACKAGING)	GENERAL WASTE (PRESORTED BY THE LOCAL AUTHORITY)	TIPS ON AVOIDANCE/ ALTERNATIVES	OTHER INFO
Sticky notes	●			Whiteboard with erasable marker pen; digital notes	
Sticky tape		● (inner roll)	● (actual tape)		
Storage baskets (plastic)			●		
Styrofoam		●			
Superglue		● (empty)			Mobile hazardous waste collection vehicle
Sweet wrappers	● (if paper)	● (if plastic)			
Sweet wrappers		●			
Tablet packaging, blister packs (empty)	● (paper packaging)	●			For leftover medicine: waste disposal guidelines (Link!)
Takeaway coffee cups		● (if laminated)		Reusable cups, such as the Studierendenwerk's LogiCup	
Tarpaulins			●		
Tea bags			● (green garbage can for organic waste, if there is one)		
Tea lights		● (empty)		LED lights	
Tetra Pak cartons		●			
Tin cans		●			
Tomato puree tubes (empty)		●			
Toner					Return to special collection boxes or straight to the seller (e.g. Lyreco)
Toothbrushes			●		
Toothpaste tubes		● (empty)	●		
Transparent film/sleeves			●		
Umbrellas			●		
Vacuum cleaner bags			●		
Vacuum packs for coffee		●			



TYPE OF WASTE	PAPER	YELLOW GARBAGE CAN (PACKAGING)	GENERAL WASTE (PRESORTED BY THE LOCAL AUTHORITY)	TIPS ON AVOIDANCE/ ALTERNATIVES	OTHER INFO
Vegetable waste			● (green garbage can for organic waste, if there is one)		
Whiteboard markers			●	Use refillable markers	Permanent marker collection box
Windfall fruit			● (actually the garbage can for organic waste)	Windfall fruit that has seen better days can often still be used, e.g. to make jam	
Wrapping paper	● (if unlined)		●	Wrap presents creatively, e.g. using newspaper or scraps of material	
Yogurt pots	● (if paper sleeve)	● (remove lids)			

